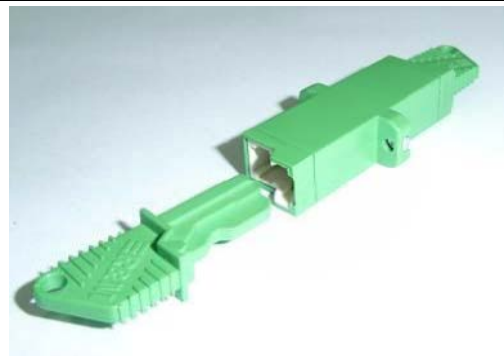


FIBER OPTIC COMPONENTS

Features **E-2000 ADAPTER**

- * Single mode, Multimode and Angle PC
- * NTT standard compatible
- * Available with flange for Simplex, saving panel space
- * Meet JIS5974 and bellcore GR-326 standard
- * Compliant with IEC874-14 & IEC874-19
- * All parts compliant with ROHS



Application

- Telecommunication
- CATV
- LAN & WAN
- Network
- Broadband
- FTTH

Parameter

Product	E-2000 Adapter		
Mode	S.M	M.M	APC
Insertion Loss	Type 0.4 dB, Max 1dB	Type 0.2 dB, Max 0.5dB	Type 0.15dB, Max
Return Loss	50dB, Min 40dB	30dB, Min 20dB	50dB, Min 40dB
Mating Durability(500 timer)	Additional Loss≤0.1dB,Return Loss Variability<5dB		
Temperature Stability(-40°C~85°C)	Additional Loss≤0.2dB,Return Loss Variability<5dB		
Operating Temperature	-40°C~+85°C		
Storage Temperature	-40°C~+85°C		

Ordering Information

CODE	SLEEVE	TYPE	HOUSING
	No	1 Simplex	1 SM Blue
			2 MM Blue
			3 APC Green